

I-75 Modernization Project, Oakland County

North of 13 Mile to South Boulevard

October 9, 2020

www.Modernize75.com | (313) 518-1078



Job Number: 201437 | CS 63174
 Contractor: Walsh/Toebe Joint Venture
 For additional historical info visit:

Michigan.gov > [MDOT](#) > [I-75 Modernization Project](#)

SEGMENT ONE (Opened to traffic in 2017)
 North of Coolidge to North of South Boulevard

SEGMENT TWO (Under Construction)
 North of 13 Mile to North of Coolidge Hwy

VIDEOS



Project Corridor

Big Beaver Diverging Diamond Interchange

PHOTOS



Livernois Bridge Demolition

Lifting Pile at Big Beaver

[View photo gallery](#)

SEGMENT TWO

North of 13 Mile to North of Coolidge Hwy

I-75 lane shift will require northbound single-lane closure

POSTED SEP 24 2020

Crews will be removing temporary barrier wall on the northbound side of the freeway. This work will require a moving lane closure, leaving one lane open in sections from 13 Mile Road to Coolidge Highway from

Construction Progress to Date

98%

PHONE CALLS (Started November 21, 2018)

128 calls asking for directions

65 calls asking about project timing

79 calls with project concerns

205 calls asking for project info

PRESS RELEASES

Michigan.gov > [Press Releases](#)

Modernize75.com > [Press Releases](#)

SOCIAL MEDIA

<https://www.facebook.com/modernize75>

<https://twitter.com/Modernize75>

facebook

Comments:

Scott S. --- I'm very excited to see these taking shape! I love that M-DOT is constantly evolving and willing to use new designs and technology.

John B. -- So happy this is open again, and the easy access to Rochester rd south was kept in place.

Brian M. -- You folks are making some great progress, thank you! I'll bet it helps you don't have 400,000 cars screaming by every day. 2000 of which are running late for work! :-)

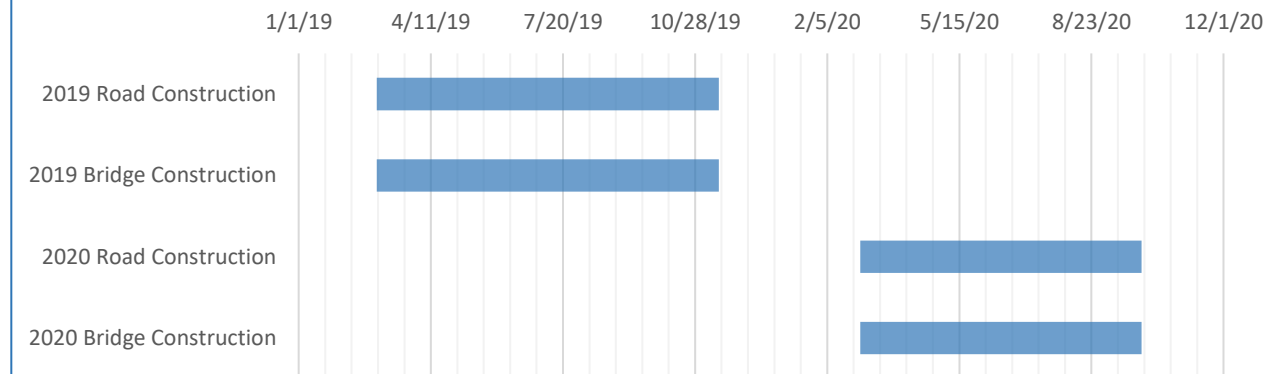
Anna G. --- great pics, thank you

John E.--- All looks great till one of the many men and women working go home with Covid-19. Keeping in mind the average age of the construction industry is 46!!!

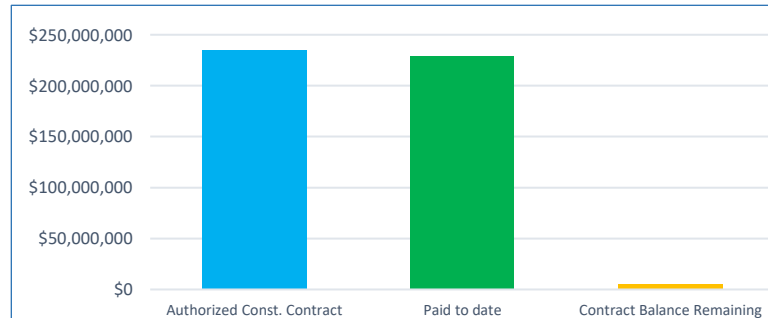
Ken M.--- Keep up the good work! WFH for now but looking forward to getting out on fresh pavement!

Kathleen T. ----- Looks great!

SCHEDULE



COSTS



Original Contract	\$223,431,500
Contract Changes	\$11,473,218
Total Current Contract	\$234,904,718
Paid to Date	\$229,716,410
Contract Bal Remaining	\$5,188,308
Percent Complete	98%